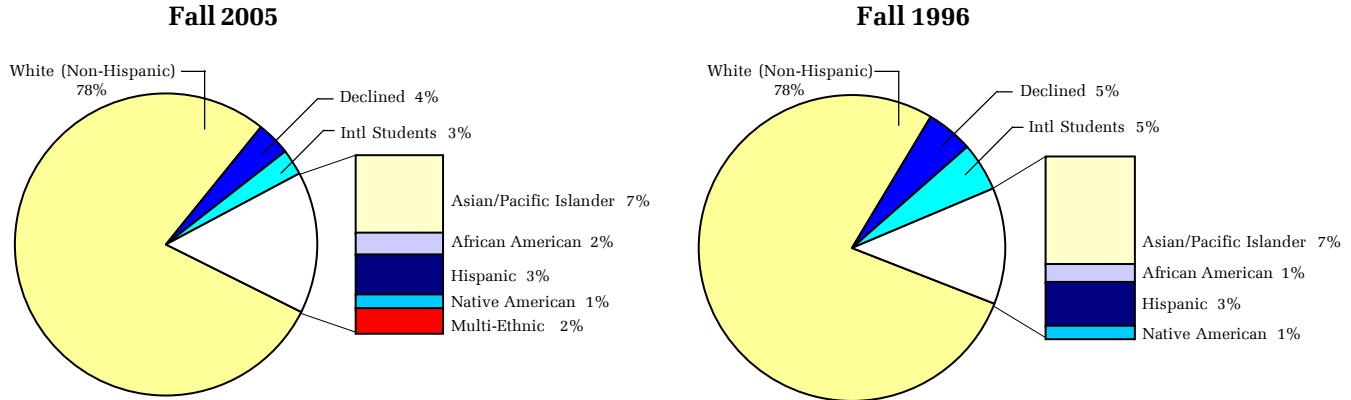




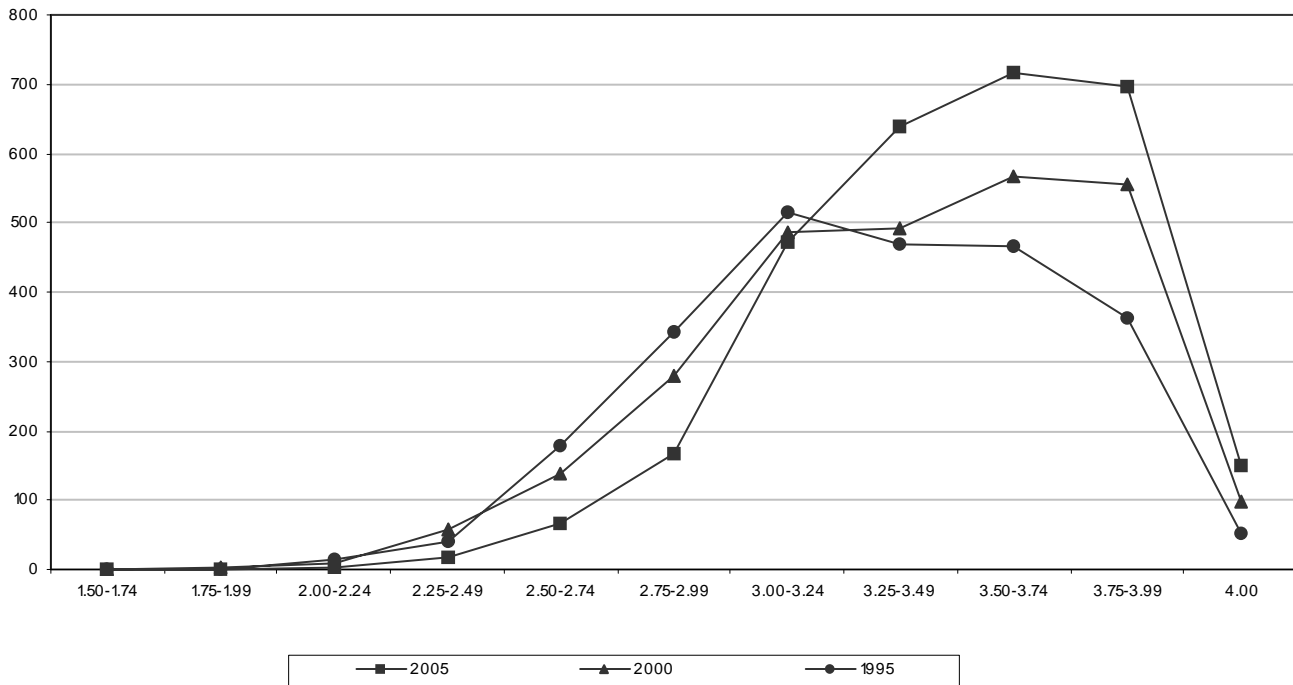
Entering Freshman Class

Ethnic Background



Ethnic background is self-reported. International students are non-U.S. citizens and non-immigrants.

Distribution of High School Grade Point Average



Mean: 2005 = 3.51; 2000 = 3.40; 1995 = 3.31

Standard Deviation: 2005 = .37; 2000 = .43; 1995 = .41